

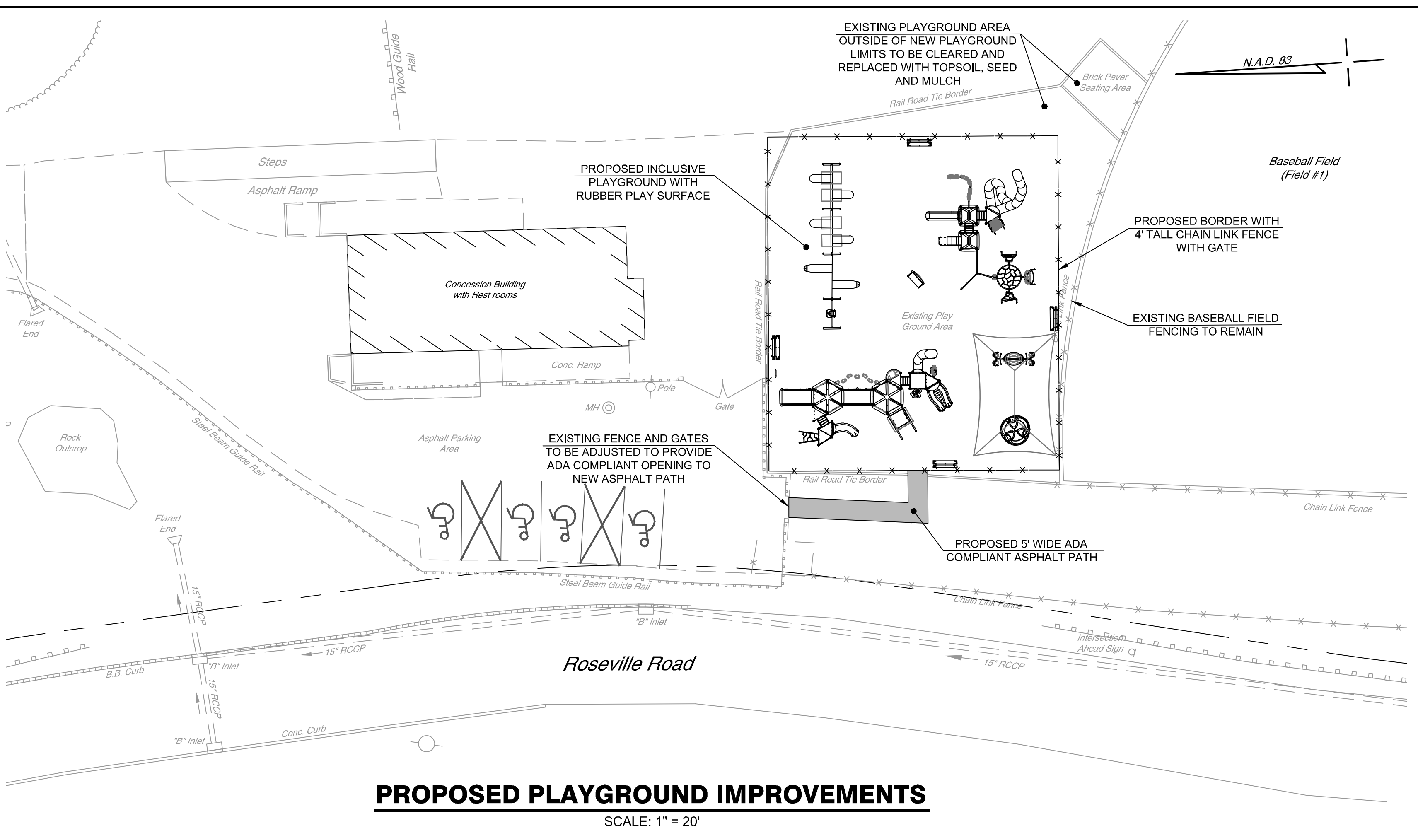
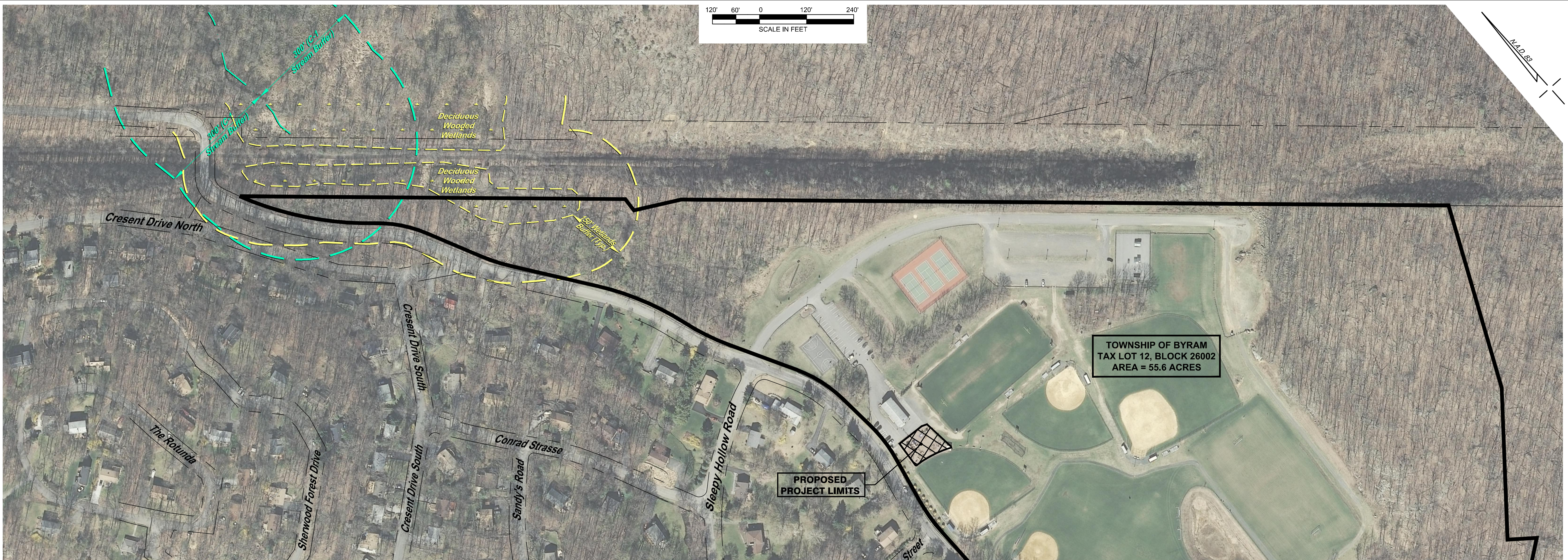
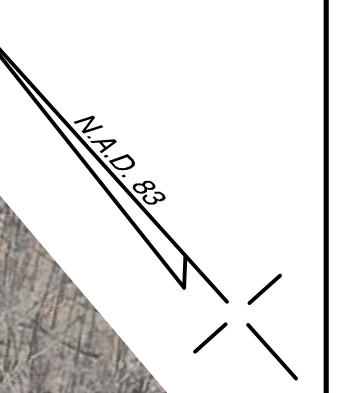
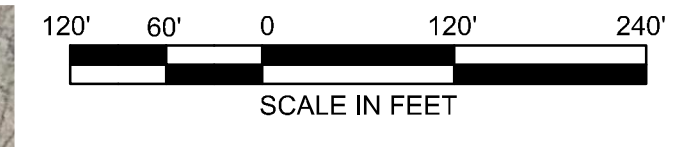
Concept Plan Checklist

The Concept Plan is the basis for Green Acres project evaluation. The size of this map should be 11" x 17" or larger and the map must include the information listed below. The Concept Plan must be prepared by a licensed professional, who should also complete this checklist. The plan should be generated using AutoCAD or Geographic Information System (GIS) technology; the layers required by the Green Acres Program are available from the DEP's GIS GeoWeb.

This checklist should be returned with the completed application. If any items are not applicable, please indicate with "N/A" next to that item. The following are required elements of the concept plan:

1. X Project name and location
2. X Block and lot numbers and municipality(ies) in which the project is located
3. X North arrow and scale of map
4. X Adjacent streets, labeled; if there are no adjacent streets, the nearest street or landmark must be included as a reference point
5. X Existing improvements and facilities shown in approximate location on parcel and labeled
6. X Proposed improvements and facilities shown in approximate location on parcel and labeled, with approximate area delineated; a detail of the specific proposed playground equipment can be provided separately
7. N/A Any areas of proposed tree clearing noted (e.g., with "X" on top of the tree)
8. X Location of all known existing easements, road rights-of-way, and encroachments
9. X Location of all streams, rivers, waterbodies, and associated buffers
10. N/A Location of tidelands, available from the [Department's Bureau of GIS](#), as determined from New Jersey Tidelands claims maps, conveyance overlays, and atlas sheets
11. N/A Location of floodplain, as shown on the New Jersey State Flood Hazard Area maps prepared under the Flood Hazard Area Control Act, N.J.S.A. 58:16A50 et seq. and available from the [DEP Office of Engineering and Construction, Bureau of Dam Safety and Flood Control](#) or as determined from other State or Federal mapping or from a site delineation
12. N/A Location of coastal wetlands, as shown on maps prepared by the Department under the Wetlands Act of 1970, N.J.S.A. 13:9A1 et seq. and available from the [Department's Bureau of GIS](#)
13. X Location of freshwater wetlands, available from the [Department's Bureau of GIS](#)

If possible, the items listed above should be superimposed on the most recent aerial image of the site (aerials available from the [Department's Bureau of GIS](#)).



PROPOSED PLAYGROUND IMPROVEMENTS
SCALE: 1" = 20'



PROPOSED CONSTRUCTION OF THE C.O. JOHNSON PARK INCLUSIVE PLAYGROUND
BYRAM TOWNSHIP - SUSSEX COUNTY - NEW JERSEY

CONCEPT PLAN

	HAROLD E. PELLOW & ASSOCIATES, INC. CERTIFICATE OF AUTHORIZATION No. 240A27959000 CONSULTING ENGINEERS 17 PLAINS ROAD - AUGUSTA - N.J. 07822 ph. (973) 948-6463 fax. (973) 948-2916	DRAWN BY: M.J.M. CHECKED BY: N/A FIELD BOOK: N/A FILE No. N/A	R.J.D. DATE: JANUARY 2024 SCALE: 1" = 120' SHEET No. 1 of 1
	CORY L. STONER, P.E. PROFESSIONAL ENGINEER N.J. LIC. No. 41027		DATE: 01/12/2024

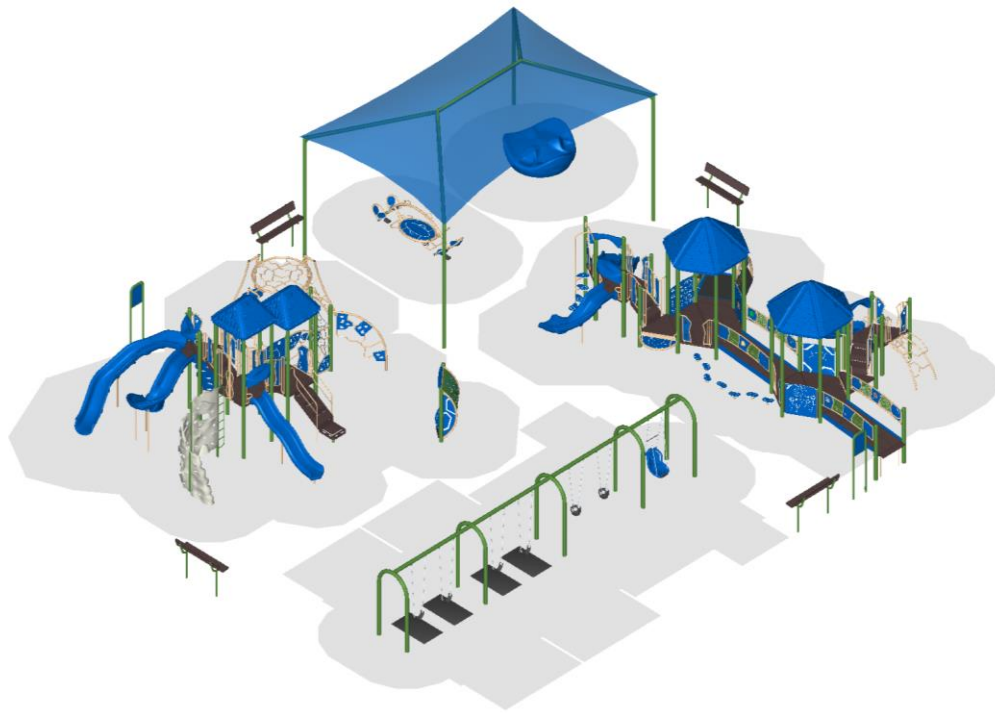
COPYRIGHT © 2024 HAROLD E. PELLOW & ASSOCIATES, INC.
All rights reserved. The copying or reuse of this document or any portion thereof is prohibited without the written consent of Harold E. Pellow & Associates, Inc. This Drawing is the sole property of Harold E. Pellow & Associates, Inc. and has been prepared specifically for use by the Owner of this Project at this Site. It is not to be used by any other person or for any other purpose or location without the advance written consent of Harold E. Pellow & Associates, Inc.

January 12, 2024 - 3:04 PM, J:\Projects\Byram_Twp\CO Johnson Park\2024 Green Acres Grant\Byram-GA-Concept.dwg (Ratonne) HAROLD E. PELLOW & ASSOCIATES, INC.

Byram DPW Co Johnson Park

Proposal # 130-122171-4
January 09, 2024

Presented by
Ben Shaffer Recreation, Inc.



Burke®



January 09, 2024

Mike Orgera
Byram DPW
10 Mansfield Dr
Byram, NB 07874

Dear Mike Orgera:

Ben Shaffer Recreation, Inc. is delighted to provide Byram DPW with this playground equipment proposal.

This design was developed with your specific needs in mind, and we look forward to discussing this project further with you to ensure your complete satisfaction. Ben Shaffer Recreation, Inc. is confident that this proposal will satisfy Byram DPW's functional, environmental, and safety requirements -- and most importantly -- bring joy and excitement to the children and families directly benefiting from your new playground.

You have our personal commitment to support this project and your organization in every manner possible, and we look forward to continue developing a long-standing relationship with Byram DPW. We appreciate your consideration and value this opportunity to earn your business.

Sincerely,

Scott Tumminello
Ben Shaffer Recreation, Inc.
PO Box 844
Lake Hopatcong, NJ 07849

Design Summary

Ben Shaffer Recreation, Inc. is very pleased to present this Proposal for consideration for the Co Johnson Park located in Byram. BCI Burke Company, LLC has been providing recreational playground equipment for over 90 years and has developed the right mix of world-class capabilities to meet the initial and continuing needs of Byram DPW. We believe our proposal will meet or exceed your project's requirements and will deliver the greatest value to you.

The following is a summary of some of the key elements of our Proposal:

- Project Name: Co Johnson Park
- Project Number: 130-122171-4
- User Capacity: 237
- Age Groups: Ages 2-5 years, 5-12 years
- Dimensions: 72' 11" x 83' 11"
- Designer Name: John Uelmen

Ben Shaffer Recreation, Inc. has developed a custom playground configuration based on the requirements as they have been presented for the Co Johnson Park playground project. Our custom design will provide a safe and affordable playground environment that is aesthetically pleasing, full of fun for all users and uniquely satisfies your specific requirements. In addition, proposal # 130-122171-4 has been designed with a focus on safety, and is fully compliant with ASTM F1487 and CPSC playground safety standards.

We invite you to review this proposal for the Co Johnson Park playground project and to contact us with any questions that you may have.

Thank you in advance for giving us the opportunity to make this project a success.

INFORMATION
MINIMUM FALL ZONE
SURFACED WITH
RESILIENT MATERIAL
AREA

4930 SQ.FT.

PERIMETER
697 FT.

STRUCTURE SIZE
72' 11" x 83' 11"

STRUCTURE IS DESIGNED
FOR CHILDREN AGES:

- 6-23 MONTH OLDS
- 2-5 YEAR OLDS
- 5-12 YEAR OLDS
- 13 + YEAR OLDS



Registered
to ISO 9001

Registered
to ISO 14001

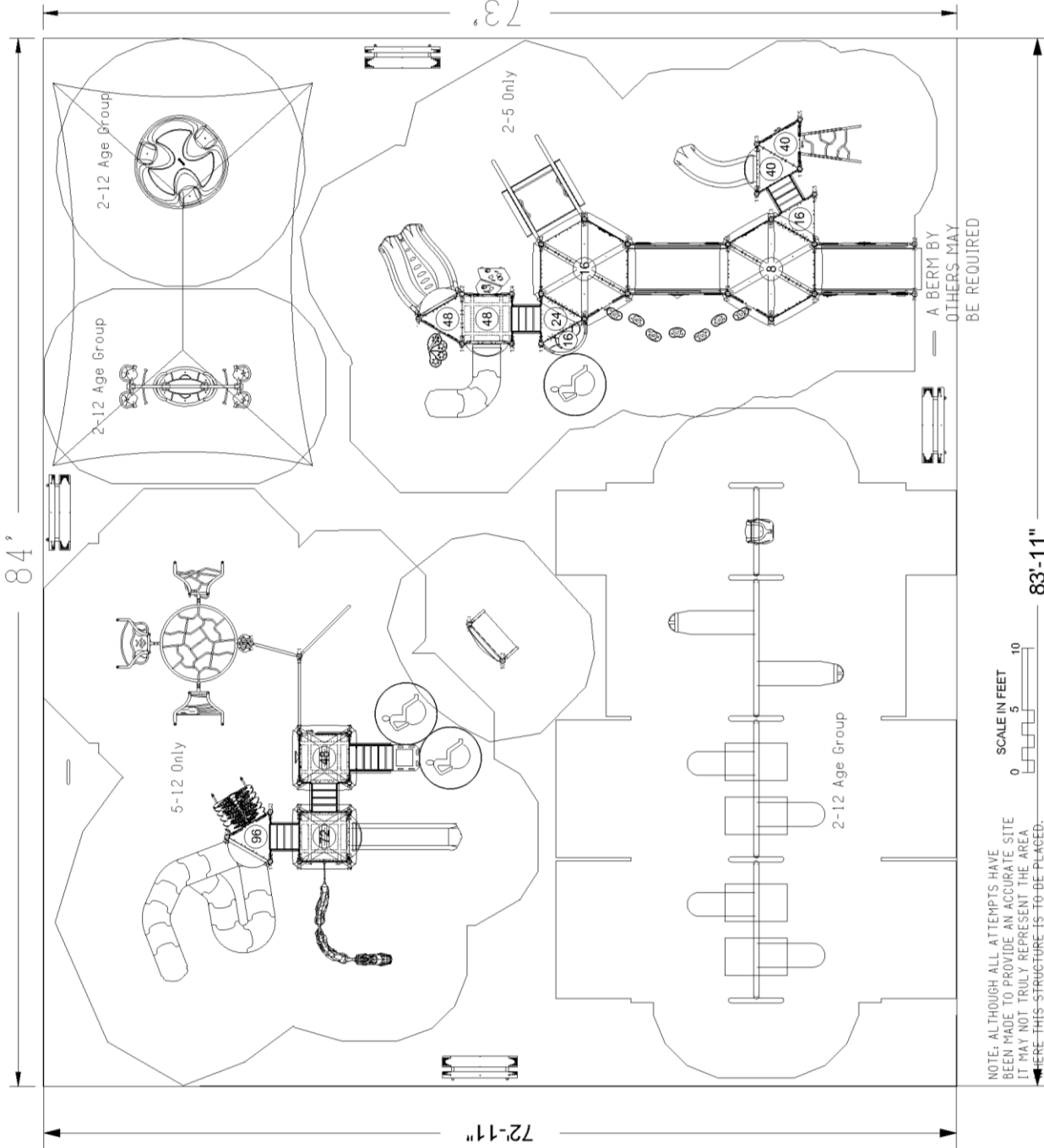


To verify product certification,
visit www.ipema.org

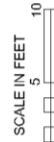
The play components identified
in this plan are IPEMA
certified. The use and layout of
these components conform to the
requirements of ASTM F1487.
To verify product certification,
visit www.ipema.org

The space requirements shown
here are to ASTM standards.
Requirements for other standards
may be different.

The use and layout of play
components identified in this plan
conform to the CPSC guidelines.
U.S. CPSC recommends the
separation of age groups in
playground layouts.



NOTE: ALTHOUGH ALL ATTEMPTS HAVE
BEEN MADE TO PROVIDE AN ACCURATE SITE
IT MAY NOT TRULY REPRESENT THE AREA
HERE THIS STRUCTURE IS TO BE PLACED.



WARNING!

ACCESSIBLE SAFETY SURFACING MATERIAL IS REQUIRED BENEATH
AND AROUND THIS EQUIPMENT.
FOR SLIDE FALL ZONE SURFACING AREA SEE CPSC's Handbook for
Public Playground Safety.
PLATFORM HEIGHTS ARE IN INCHES ABOVE RESILIENT MATERIAL.

ADA ACCESSIBILITY GUIDELINE (ADAAG CONFORMANCE)

NUMBER OF PLAY EVENTS	48
NUMBER OF ELEVATED PLAY EVENTS	24
NUMBER OF ELEVATED PLAY EVENTS ACCESSIBLE BY RAMP	PROVIDED: 5
NUMBER OF ELEVATED PLAY EVENTS ACCESSIBLE BY TRANSFER SYSTEM	PROVIDED: 24
NUMBER OF ELEVATED PLAY EVENTS ACCESSIBLE BY RAMP OR TRANSFER SYSTEM	PROVIDED: 24
NUMBER OF GROUND LEVEL PLAY EVENTS	PROVIDED: 8
NUMBER OF TYPES OF GROUND LEVEL PLAY EVENTS	PROVIDED: 4



SERIES: Basics, Intensity, Nucleus

SITE PLAN

DRAWN BY: John Uelmen

Co Johnson Park

Roseville & Sleepy Hollow

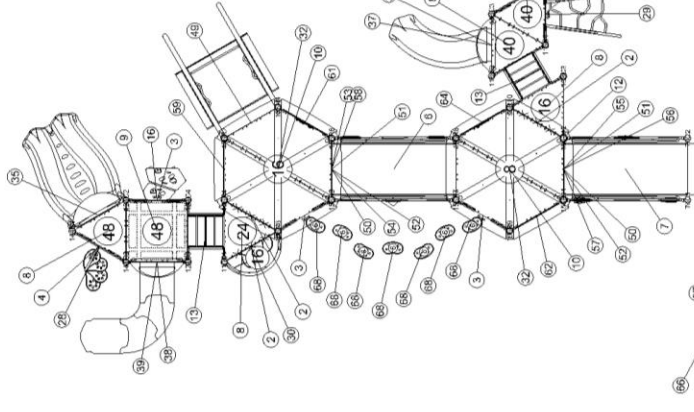
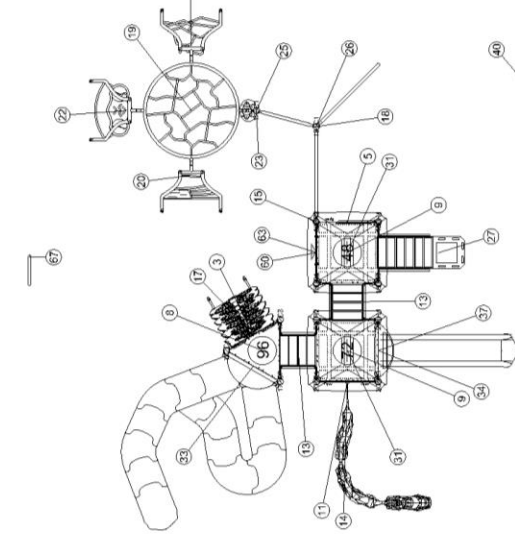
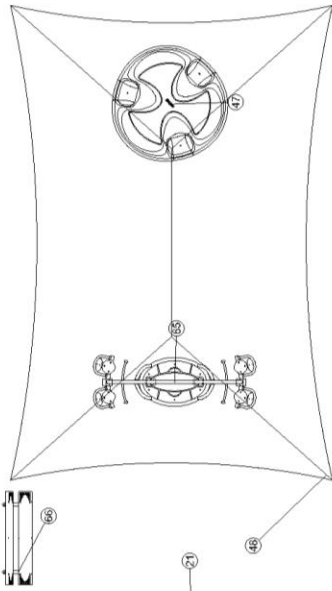
Byram, NJ 07874

January 09, 2024

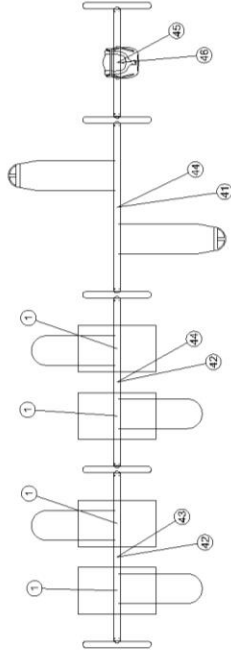
Ben Shaffer Recreation, Inc.

130-122171-4

ITEM	COMP	DESCRIPTION
1	046-0536	PLAYMAT 3' X 5' X 2"
2	270-0009	8" CLOSURE PLATE, ELLIPSE
3	270-0120	EVOLUTION UNITARY ENCLOSURE
4	270-0121	EVOLUTION STANCHION
5	270-0122	EVOLUTION OFFSET ENCLOSURE
6	270-0124	SENSORY RAIL 8" RISE RAMP
7	270-0125	SENSORY RAIL 8" RISE ENTRANCE
8	270-0129	TRIANGLE PLATFORM
9	270-0130	SQUARE PLATFORM
10	270-0131	HEXAGONAL PLATFORM S5P
11	270-0292	EVOLUTION CENTER MOUNT EN
12	370-0016	GRAB BAR ASSEMBLY
13	370-0039	EVOLUTION 24" TRANSITION ST/
14	370-0130	ROCKIT LEFT 72"
15	370-0204	LINK LEVITATE CLIMBER
16	370-0231	FORMIS LADDER 48"
17	370-0799	JUNGLE VINE CLIMBER 96"
18	370-0810	POWER PEAK W/ PANELS
19	370-0829	PLEXUS OVERHEAD
20	370-0830	PLEXUS HOLE CLIMBER
21	370-0832	PLEXUS TANGLE CLIMBER
22	370-0833	PLEXUS STEP CLIMBER
23	370-0834	OVERHEAD POST ATTACHMENT
24	370-0861	TREE BRANCH CLIMBER 40"
25	370-1608	OVISTEP LAUNCH PAD
26	370-1616	TAKTIKS, TALL ROPE WALL
27	370-1659	TRANSFER STATION, HANDRAIL
28	370-1671	PETAL STEP CLIMBER 40"-48"
29	370-1680	BETA CLIMBER 32"-40"
30	470-0075	CRESCENT PLATFORM
31	470-0517	SHAKER SQUARE ROOF
32	470-0518	SHAKER HEX ROOF
33	470-0574	VIPER II OVER UNDER 96"
34	470-0664	ROCK'N ROLL SLIDE, 64" - 72" W/
35	470-0795	LUGE SLIDE, 48"-56"
36	470-0802	MONACO SLIDE, 32"-40"
37	470-0804	SLIDE HOOD, LOW SIDE WALL
38	470-0805	SLIDE HOOD, HIGH SIDE WALL
39	470-0821	VIPER R2 48-56 W/O HOOD
40	470-0870	SERENITY SPOT
41	560-0100	TOT SEAT, 7' & 8' PAIR, STD CH/
42	560-0112	BELT SEAT, 8' PAIR, STD CHAIN
43	550-0135	5" OD ARCH SWING
44	550-0136	5" OD ARCH SWING ADD-ON
45	550-0171	FREEDOM SWING SEAT, 8' BEAN
46	560-0189	5" OD ARCH SWING, ADD-ON - S
47	560-2579	VOLTA INCLUSIVE SPINNER
48	560-2628	20' X 30' X 10' SHADEPLAY MAX
49	570-0103	INNOVA ROCKER
50	570-0104	SENSORY RAIL TOP PANEL
51	570-0105	SENSORY RAIL MIDDLE PANEL
52	570-0106	SENSORY RAIL LOWER PANEL
53	570-0109	CHROMA SENSORY EVENT, LOW
54	570-0110	BELL SENSORY EVENT, LEFT
55	570-0115	HYPO SENSORY EVENT, MIDDLE
56	570-0119	MELODY SENSORY EVENT, LOW
57	570-0123	GROOVY SENSORY EVENT, TOP
58	570-0126	GRASS SENSORY EVENT, TOP
59	570-0842	ABC 2-SIDED PLAY PANEL
60	570-1858	3-IN-A-RW PANEL, ABOVE PLA
61	570-1863	RAIN WHEEL PANEL
62	570-2664	BEE PANEL
63	570-2668	CAR ACCESSIBLE REACH PANEL
64	570-2736	PISTON PANEL
65	570-2745	ORB ROCKER
66	580-0172	6' PVC TRADITIONAL BENCH W/
67	580-1302	FS SIGN, CUSTOM/CUSTOM
68	580-1364	LIL NOVO BEAN STEP



A BERM BY
OTHERS MAY
BE REQUIRED



January 09, 2024

SERIES: Basics, Intensity, Nucleus
COMPONENT PLAN
DRAWN BY: John Uelmen

Co Johnson Park
Roseville & Sleepy Hollow
Byram, NJ 07874

Ben Shaffer Recreation, Inc.
130-122171-4



SERIES: Basics, Intensity, Nucleus
ELEVATION PLAN
DRAWN BY: John Uelmen

Co Johnson Park
Roseville & Sleepy Hollow
Byram, NJ 07874

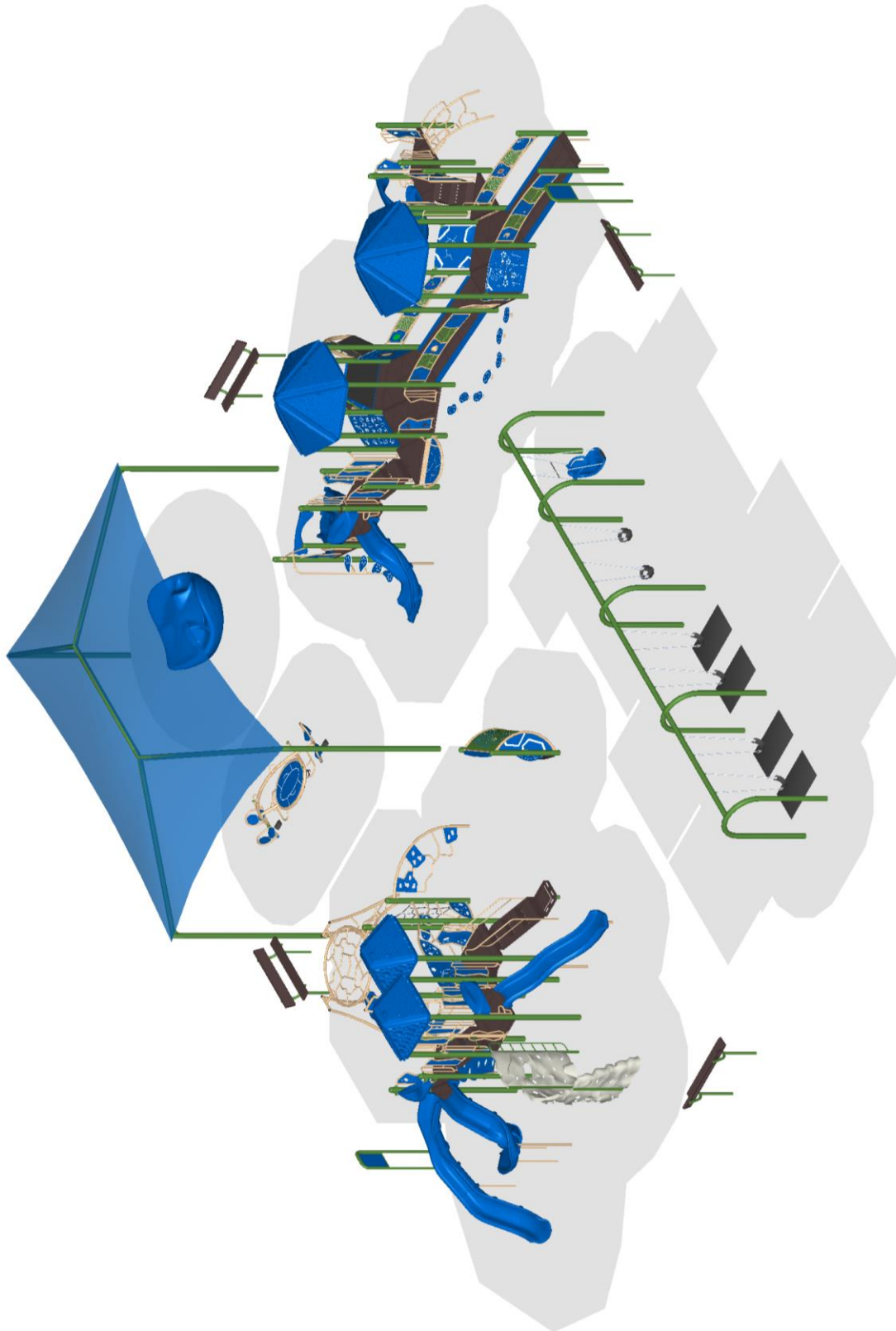
Ben Shaffer Recreation, Inc.
130-122171-4

BCI Burke Company, LLC PO Box 549 Fond du Lac, Wisconsin 54936-0549 Telephone 920-921-9220



The protective surfacing for this design must accommodate the critical fall height.

January 09, 2024



Burke

January 09, 2024

SERIES: Basics, Intensity, Nucleus

ISOMETRIC PLAN

DRAWN BY: John Uelmen

Co Johnson Park
Roseville & Sleepy Hollow
Byram, NJ 07874

Ben Shaffer Recreation, Inc.

130-122171-4

BCI Burke Company, LLC PO Box 549 Fond du Lac, Wisconsin 54936-0549 Telephone 920-921-9220



Proposal # 130-122171-4

January 09, 2024
2024 Pricing

Proposal Prepared for:

Mike Orgera
Byram DPW
10 Mansfield Dr
Byram, NB 07874
Phone:

Project Location:

Co Johnson Park
Roseville & Sleepy Hollow
Byram, NJ 07874

Proposal Prepared by:

Ben Shaffer Recreation, Inc.
PO Box 844
Lake Hopatcong, NJ 07849
Phone: 973-663-2021
Fax: 973-663-4615
sales@benshaffer.com

Scott Tumminello
Phone: 973-663-2021
Fax: 973-663-4615
scott@benshaffer.com

Component No.	Description	Qty	User Cap	Ext. User Cap	Weight	Ext. Weight
Burke Basics						
046-0536	PLAYMAT 3' X 5' X 2"	4	0	0	136	544
550-0100	TOT SEAT, 7' & 8' PAIR, STD ...	1	2	2	23	23
550-0112	BELT SEAT, 8' PAIR, STD CHAIN	2	2	4	20	40
550-0135	5" OD ARCH SWING	1	0	0	366	366
550-0136	5" OD ARCH SWING ADD-ON	2	0	0	223	446
550-0171	FREEDOM SWING SEAT, 8' BEAM, ...	1	1	1	38	38
550-0189	5" OD ARCH SWING, ADD-ON - SI...	1	0	0	195	195
560-2579	VOLTA INCLUSIVE SPINNER	1	9	9	475	475
570-2745	ORB ROCKER	1	8	8	541	541
580-0172	6' PVC TRADITIONAL BENCH W/BA...	4	0	0	119	476
580-1302	FS SIGN, CUSTOM/CUSTOM	2	0	0	44	88
580-1364	LIL NOVO BEAN STEP	7	1	7	28	196
660-0101	INSTALL KIT, BURKE BASICS - P...	1	0	0	2	2
Intensity						
370-0829	PLEXUS OVERHEAD	1	14	14	96	96
370-0830	PLEXUS HOLE CLIMBER	1	2	2	97	97
370-0832	PLEXUS TANGLE CLIMBER	1	2	2	89	89
370-0833	PLEXUS STEP CLIMBER	1	2	2	121	121
370-0834	OVERHEAD POST ATTACHMENT	1	0	0	3	3
370-1608	OVISTEP LAUNCH PAD	1	1	1	10	10
370-1616	TAKTIKS, TALL ROPE WALL	1	2	2	31	31
470-0870	SERENITY SPOT	1	2	2	303	303
Nucleus						
072-0500-108C	5" OD X 108" CAPPED POST	3	0	0	57	171
072-0500-116C	5" OD X 116" CAPPED POST	5	0	0	61	305
072-0500-120C	5" OD X 120" CAPPED POST	1	0	0	63	63
072-0500-124C	5" OD X 124" CAPPED POST	4	0	0	65	260
072-0500-144C	5" OD X 144" CAPPED POST	2	0	0	76	152
072-0500-172C	5" OD X 172" CAPPED POST	3	0	0	90	270
072-0500-76C	5" OD X 76" CAPPED POST	2	0	0	40	80
072-0501-156R	5" OD X 156" ROOF POST	12	0	0	82	984
072-0501-180R	5" OD X 180" ROOF POST	4	0	0	94	376
072-0501-204R	5" OD X 204" ROOF POST	4	0	0	107	428
270-0009	8" CLOSURE PLATE, ELLIPSE	3	0	0	8	24
270-0120	EVOLUTION UNITARY ENCLOSURE	6	0	0	34	204



Proposal # 130-122171-4

January 09, 2024
2024 Pricing

270-0121	EVOLUTION STANCHION	1	0	0	43	43
270-0122	EVOLUTION OFFSET ENCLOSURE	1	0	0	34	34
270-0124	SENSORY RAIL 8" RISE RAMP	1	21	21	406	406
270-0125	SENSORY RAIL 8" RISE ENTRANCE...	1	0	0	440	440
270-0129	TRIANGLE PLATFORM	6	2	12	48	288
270-0130	SQUARE PLATFORM	3	6	18	106	318
270-0131	HEXAGONAL PLATFORM S5P	2	12	24	287	574
270-0292	EVOLUTION CENTER MOUNT ENCLOS...	1	0	0	40	40
370-0016	GRAB BAR ASSEMBLY	1	0	0	6	6
370-0039	EVOLUTION 24" TRANSITION STAI...	4	4	16	181	724
370-0130	ROCKIT LEFT 72	1	15	15	318	318
370-0204	LINX LEVITATE CLIMBER	1	6	6	223	223
370-0231	FORMIS LADDER 48	1	3	3	71	71
370-0799	JUNGLE VINE CLIMBER 96"	1	2	2	161	161
370-0810	POWER PEAK W/ PANELS	1	8	8	87	87
370-0861	TREE BRANCH CLIMBER 40"	1	2	2	17	17
370-1659	TRANSFER STATION, HANDRAIL 48"	1	6	6	210	210
370-1671	PETAL STEP CLIMBER 40"-48"	1	3	3	48	48
370-1680	BETA CLIMBER 32"-40"	1	1	1	71	71
470-0075	CRESCENT PLATFORM	1	1	1	52	52
470-0517	SHAKER SQUARE ROOF	2	0	0	136	272
470-0518	SHAKER HEX ROOF	2	0	0	231	462
470-0574	VIPER II OVER UNDER 96	1	8	8	479	479
470-0664	ROCK'N ROLL SLIDE, 64" - 72" ...	1	2	2	111	111
470-0755	LUGE SLIDE, 48"-56"	1	4	4	198	198
470-0802	MONACO SLIDE, 32"-40"	1	2	2	71	71
470-0804	SLIDE HOOD, LOW SIDE WALL	2	0	0	32	64
470-0805	SLIDE HOOD, HIGH SIDE WALL	1	0	0	32	32
470-0821	VIPER R2 48-56 W/O HOOD	1	2	2	127	127
570-0103	INNOVA ROCKER	1	14	14	703	703
570-0104	SENSORY RAIL TOP PANEL	2	0	0	7	14
570-0105	SENSORY RAIL MIDDLE PANEL	2	0	0	7	14
570-0106	SENSORY RAIL LOWER PANEL	2	0	0	8	16
570-0109	CHROMA SENSORY EVENT, LOWER	1	0	0	13	13
570-0110	BELL SENSORY EVENT, LEFT	1	0	0	24	24
570-0115	HYPNO SENSORY EVENT, MIDDLE	1	0	0	20	20
570-0119	MELODY SENSORY EVENT, LOWER	1	0	0	19	19
570-0123	GROOVY SENSORY EVENT, TOP	1	0	0	26	26
570-0126	GRASS SENSORY EVENT, TOP	1	0	0	16	16
570-0842	ABC 2-SIDED PLAY PANEL	1	2	2	44	44
570-1858	3-IN-A-ROW PANEL, ABOVE PLATF...	1	2	2	45	45
570-1863	RAIN WHEEL PANEL	1	2	2	59	59
570-2664	BEE PANEL	1	2	2	45	45
570-2668	CAR ACCESSIBLE REACH PANEL	1	2	2	23	23
570-2736	PISTON PANEL	1	1	1	47	47
600-0104	NPPS SUPERVISION SAFETY KIT	1	0	0	3	3
660-0103	MAINTENANCE KIT, STRUCTURE	1	0	0	7	7
660-0104	INSTALLATION KIT, STRUCTURE	1	0	0	5	5
ShadePlay Max						
560-2628	20' X 30' X 10' SHADEPLAY MAX...	1	0	0	986	986

Total User Capacity: 237
Total Weight: 15,572 lbs.
Total Price: \$205,656



Proposal # 130-122171-4

January 09, 2024
2024 Pricing

Information is relative to the Jan 9 2024 4:35AM database.

Special Notes:

Prices do not include freight, unloading, material storage, site excavation/preparation, removal of existing equipment, removal of excess soil from footing holes, site security, safety surfacing, installation, or sales tax (if applicable). Prices are based on standard colors per CURRENT YEAR BCI Burke Catalog. Custom colors, where available, would be an extra charge. **Pricing is valid for 30 days from the date of this proposal.**



Proposal # 130-122171-4

January 09, 2024

2024 Pricing

Selected Color List

<u>Color Group</u>	<u>Color</u>
---------------------------	---------------------

Phase 1

Platform	Brown
Accessory	Tan
Post	Olive
Kore Konnect	Olive
1 Color Extruded/Flat	Blue
Rotomolded	Blue
2 Color Extruded/Flat (outer)	Blue
2 Color Extruded/Flat (inner)	White
Intensity/Rocky Mountain	Blue
Rotomolded Roofs	Blue
RockIt	Sandstone

Phase 2

Platform	Brown
Accessory	Tan
1 Color Extruded/Flat	Blue
Post	Olive
Kore Konnect	Olive
2 Color Extruded/Flat (outer)	Blue
2 Color Extruded/Flat (inner)	White
Rotomolded	Blue

Phase 3

Accessory	Tan
1 Color Extruded/Flat	Blue
2 Color Extruded/Flat (outer)	Blue
2 Color Extruded/Flat (inner)	White
Post	Olive

Phase 4

Contemporary Swing Fittings	Olive
Accessory	Tan
Rotomolded	Blue
1 Color Extruded/Flat	Blue
2 Color Extruded/Flat (outer)	Blue
2 Color Extruded/Flat (inner)	White
Post	Olive
Table/Bench Legs	Olive
Table/Bench	Brown
Canopy	Blue
Platform	Brown

BURKE GENERATIONS WARRANTY®

BCI Burke Company, LLC ("Burke") warrants that all standard products are warranted to be free from defects in materials and workmanship, under normal use and service, for a period of one (1) year from the date of shipment.

We stand behind our products.

In addition, the following products are warranted, under normal use and service from the date of shipment as follows:

- One Hundred (100) Year Limited Warranty on aluminum and steel upright posts (including Intensity®, Synergy®, Nucleus®, Voltage®, Little Buddies®, ELEVATE®, ACTIVATE®, INVIGORATE®) against structural failure due to corrosion, deterioration or workmanship.
- One Hundred (100) Year Limited Warranty on KoreKconnect® clamps against structural failure due to corrosion, deterioration or workmanship.
- One Hundred (100) Year Limited Warranty on Hardware (nuts, bolts, washers)
- One Hundred (100) Year Limited Warranty on bolt-through fastening and clamp systems (Synergy®, Intensity®, Nucleus®, Voltage®, Little Buddies®, ELEVATE®).
- Twenty-Five (25) Year Limited Warranty on spring assemblies and aluminum cast animals.
- Fifteen (15) Year Limited Warranty on structure platforms and decks, metal roofs, table tops, bench tops, railings and barriers against structural failure due to materials or workmanship.
- Fifteen (15) Year Limited Warranty on all plastic components including StoneBorders against structural failure due to materials or workmanship.
- Ten (10) Year Limited Warranty on ShadePlay® Canopies fabric, threads, and cables against degradation, cracking or material breakdown resulting from ultra-violet exposure, natural deterioration or manufacturing defects. This warranty is limited to the design loads as stated in the specifications.
- Ten (10) Year Limited Warranty on NaturePlay® Boulders and GFRG products against structural failure due to natural deterioration or workmanship. Natural wear, which may occur with any concrete product with age, is excluded from this warranty.
- Ten (10) Year Limited Warranty on Full Color Custom Signage against manufacturing defects that cause delamination or degradation of the sign. Full Color Custom Signs also carry a two (2) year warranty against premature fading of the print and graphics on the signs.
- Five (5) Year Limited Warranty on Intensity® and RopeVenture® cables and LEVEL X® flex bridge against premature wear due to natural deterioration or manufacturing defects. Determination of premature wear will be at the manufacturer's discretion.
- Five (5) Year Limited Warranty on moving parts, including swing components, against structural failure due to materials or workmanship.
- Five (5) Year Limited Warranty on PlayEnsemble® cables and mallets against defects in materials and workmanship.
- Three (3) Year Limited Warranty on electronic panel speakers, sound chips and circuit boards against electronic failure caused by manufacturing defects.

The warranty stated above is valid only if the equipment is erected in conformity with the layout plan and/or installation instructions furnished by BCI Burke Company, LLC using approved parts, have been maintained and inspected in accordance with BCI Burke Company, LLC instructions. Burke's liability and your exclusive remedy hereunder will be limited to repair or replacement of those parts found in Burke's reasonable judgment to be defective. Any claim made within the above stated warranty periods must be made promptly after discovery of the defect. A part is covered only for the original warranty period of the applicable part. Replacement parts carry the applicable warranty from the date of shipment of the replacement from Burke. After the expiration of the warranty period, you must pay for all parts, transportation and service charges.

Burke reserves the right to accept or reject any claim in whole or in part. Burke will not accept the return of any product without its prior written approval. Burke will assume transportation charges for shipment of the returned product if it is returned in strict compliance with Burke's written instructions.

THE FOREGOING WARRANTIES ARE EXCLUSIVE AND IN LIEU OF ANY OTHER WARRANTY, EXPRESS OR IMPLIED, INCLUDING BUT NOT LIMITED TO ANY IMPLIED WARRANTY OR MERCHANTABILITY OR FITNESS FOR A PARTICULAR PURPOSE. IF THE FOREGOING DISCLAIMER OF ADDITIONAL WARRANTIES IS NOT GIVEN FULL FORCE AND EFFECT, ANY RESULTING ADDITIONAL WARRANTY SHALL BE LIMITED IN DURATION TO THE EXPRESS WARRANTIES AND BE OTHERWISE SUBJECT TO AND LIMITED BY THE TERMS OF BURKE'S PRODUCT WARRANTY. SOME STATES DO NOT ALLOW THE EXCLUSION OF CERTAIN IMPLIED WARRANTIES, SO THE ABOVE LIMITATION MAY NOT APPLY TO YOU.

Warranty Exclusions: The above stated warranties do not cover: "cosmetic" defects, such as scratches, dents, marring, or fading; damage due to incorrect installation, vandalism, misuse, accident, wear and tear from normal use, exposure to extreme weather; immersion in salt or chlorine water, unauthorized repair or modification, abnormal use, lack of maintenance, or other cause not within Burke's control; and

Limitation of Remedies: Burke is not liable for consequential or incidental damages, including but not limited to labor costs or lost profits resulting from the use of or inability to use the products or from the products being incorporated in or becoming a component of any other product. If, after a reasonable number of repeated efforts, Burke is unable to repair or replace a defective or nonconforming product, Burke shall have the option to accept return of the product, or part thereof, if such does not substantially impair its value, and return the purchase price as the buyer's entire and exclusive remedy. Without limiting the generality of the foregoing, Burke will not be responsible for labor costs involved in the removal of products or the installation of replacement products. Some states do not allow the exclusion of incidental damages, so the above exclusion may not apply to you.

The environment near a saltwater coast can be extremely corrosive. Some corrosion and/or deterioration is considered "normal wear" in this environment. Product installed within 500 yards of a saltwater shoreline will only be covered for half the period of the standard product warranty, up to a maximum of five years, for defects caused by corrosion. Products installed in direct contact with saltwater or that are subjected to salt spray are not covered by the standard warranty for any defects caused by corrosion.

Contact your local Burke Representative for warranty information regarding Burke Turf® and Burke Tile products.

Terms of Sale

Pricing: Prices published in this catalog are in USD, are approximate and do not include shipping & handling, surfacing, installation nor applicable taxes. All prices are subject to change without notice. Contact your Burke representative for current pricing. Payments are to be made in USD.

Weights: Weights are approximate and may vary with actual orders.

Installation: All equipment is shipped unassembled. For a list of factory-certified installers in your area, please contact your Burke representative.

Specifications: Product specifications in this catalog were correct at the time of publication. However, product improvements are ongoing at Burke, and we reserve the right to change or discontinue specifications without notice.

Loss or Damage in Transit: A signed bill of lading is our receipt from a carrier that our shipment to you was complete and in good condition upon arrival. Before you sign, please check the Bill of Lading carefully when the shipment arrives to make sure nothing is missing and there are no damages. Once the shipment leaves our plant, we are no longer responsible for any damage, loss or shortage.

For more information regarding the warranty, call Customer Service at 920-921-9220 or 1-800-356-2070.

01/2023

BCIBURKE.COM

Burke

800.266.1250